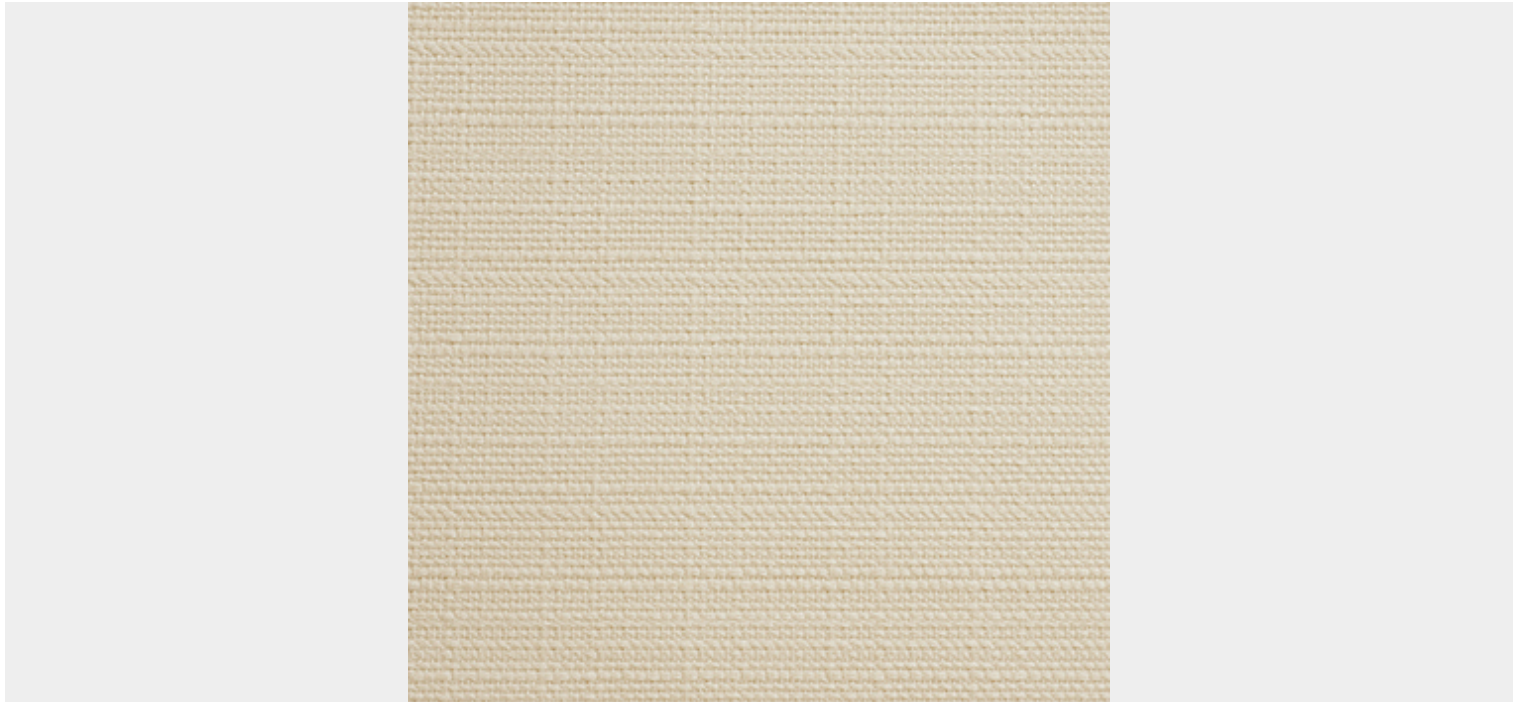


## ALBA BISCOTTI



Images are for illustration purposes only, different screens will project different shades, please order your free sample to establish appropriateness of colour prior to order placement.

**SKU:** 206ALB4/841 | **Categories:** [Alba](#), [Alba](#) |

**Wash & Care** Vacuum or wipe clean routinely with a microfibre cloth lightly dampened with cold water only. Soak up spillages as soon as possible with an absorbent dry cloth to prevent staining. Do not steam clean. Do not tumble dry. Do not dry clean. Remove body fluids and extreme soiling immediately (within 15 minutes) with cold water then apply approved infection control protocol: Haz Tabs, Chlor Clean or Shield Plus etc. As the concentration of bleach can vary greatly among proprietary brands we recommend these be avoided but in extreme circumstances a 2,500PPM solution may be used. Remove product residues and then dry with a clean absorbent cloth. Do not fully immerse in water Do not apply solvents, alcohol or any other chemical cleaners Not suitable for piping. |

## ADDITIONAL INFORMATION

### Collection

[Alba](#)

### Flammability Ratings

[BS 5852 IGN Source 5](#), [BS 7176 Medium Hazard](#), [CAL TB 117](#), [EN 1021 1/2](#), [IMO FTP CODE 2010 Part 8](#), [NFPA 260](#)

<b>Design</b>	<u>Alba</u>
<b>Colourway</b>	<u>841 Biscotti</u>
<b>Colour</b>	<u>Cream</u>
<b>Product Type</b>	<u>Woven</u>
<b>End Use</b>	<u>Upholstery</u>
<b>Sector</b>	<u>Cruise, Healthcare, Hospitality, Workspace</u>
<b>Material</b>	<u>Fire Retardant, Polyester</u>
<b>Pattern Type</b>	<u>Plain</u>
<b>Width</b>	<u>Standard Width</u>
<b>Width (cm)</b>	<u>137</u>
<b>Weight (g/m2)</b>	<u>390</u>
<b>Martindale Scale</b>	<u>100,001 - 200,000</u>
<b>Martindale Abrasion</b>	<u>130,000</u>
<b>Wyzenbeek Scale</b>	<u>50,001 - 100,000</u>
<b>Wyzenbeek DR</b>	<u>65,000</u>
<b>Technical Features</b>	<u>Antimicrobial, Breathable, Stain Resistant, Waterproof</u>
<b>LRV Scale</b>	<u>50 +</u>
<b>LRV</b>	<u>52.8</u>
<b>FR Territories</b>	<u>Cruise, UK, USA</u>