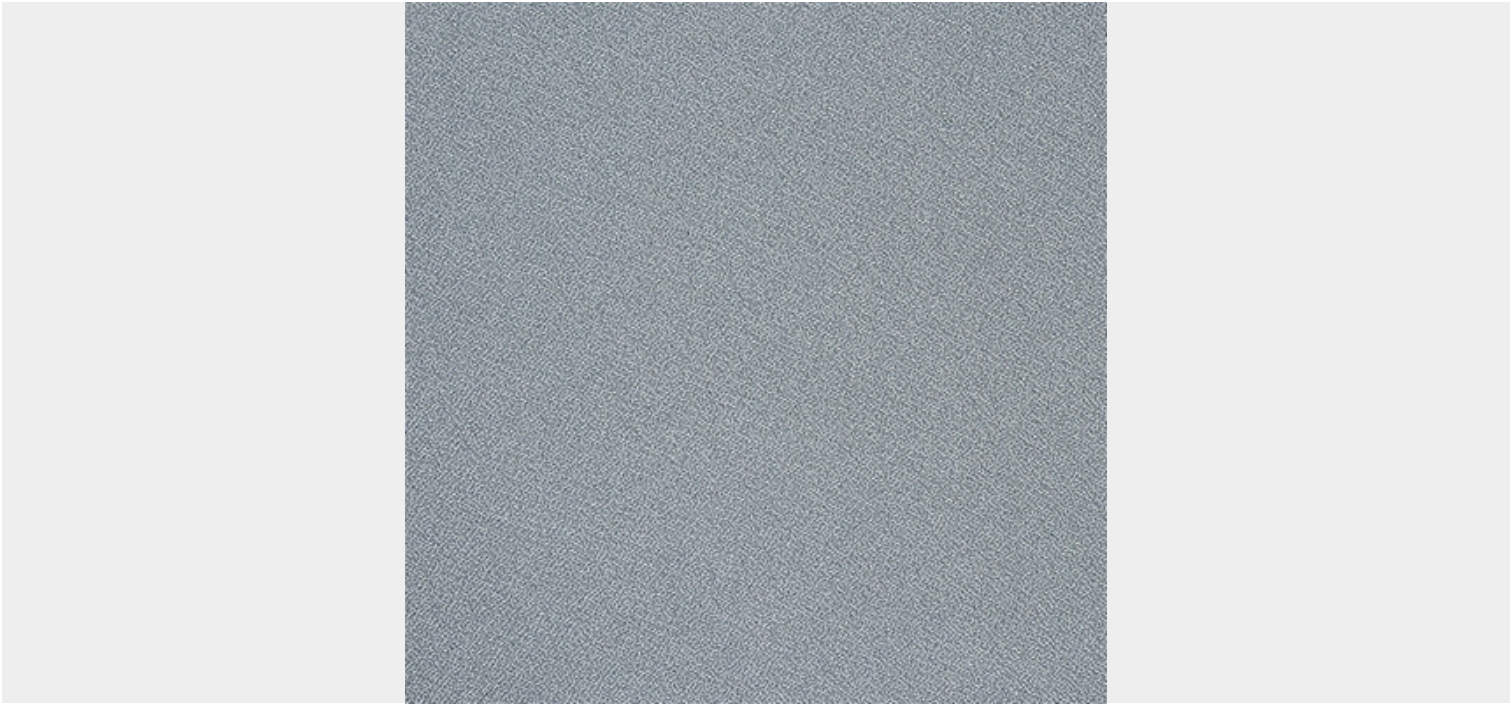


ECOTWIST ASH



Images are for illustration purposes only, different screens will project different shades, please order your free sample to establish appropriateness of colour prior to order placement.

SKU: 507ECO1/906 | **Categories:** [EcoTwist](#), [EcoTwist](#) |

Wash & Care Vacuum or wipe clean routinely with a microfibre cloth lightly dampened with cold water only. Soak up spillages as soon as possible with an absorbent dry cloth to prevent staining. If soiling has accumulated use a mild Proprietary cleaner (non-alkaline). Take care to remove all soap residues and dry with an absorbent cloth. Do not apply solvents, alcohol or any other chemical cleaners. Do not steam clean - heat seals in stains. Do not use bleach. Wash at 30°C / 86°F. Cool tumble dry Professional dry clean. Iron at maximum temperature 110°C / 230°F. |

ADDITIONAL INFORMATION

Collection	EcoTwist
Flammability Ratings	BS 5852 IGN Source 5 , BS 7175 IGN Source 5 , BS 7176 Medium Hazard , CAL TB 117 , EN 1021 1/2 , NFPA 260
Design	EcoTwist
Colourway	906 Ash

Colour	<u>Grey</u>
Product Type	<u>Woven</u>
End Use	<u>Upholstery</u>
Sector	<u>Hospitality, Workspace</u>
Material	<u>Fire Retardant, Polyester, Recycled Polyester</u>
Pattern Type	<u>Plain</u>
Width	<u>Standard Width</u>
Width (cm)	<u>140</u>
Weight (g/m2)	<u>315</u>
Martindale Scale	<u>80,001 – 100,000</u>
Martindale Abrasion	<u>90,000</u>
Wyzenbeek Scale	<u>0 – 50,000</u>
Wyzenbeek DR	<u>50,000</u>
LRV Scale	<u>11 – 20</u>
LRV	<u>14.6</u>
Sustainability	<u>100% Recycled Materials, Recyclable</u>
FR Territories	<u>UK, USA</u>
Colour Fastness	Colour Fastness to Light – Grade 6, Colour Fastness to Dry Rubbing – Grade 4-5, Colour Fastness to Wet Rubbing – Grade 4-5