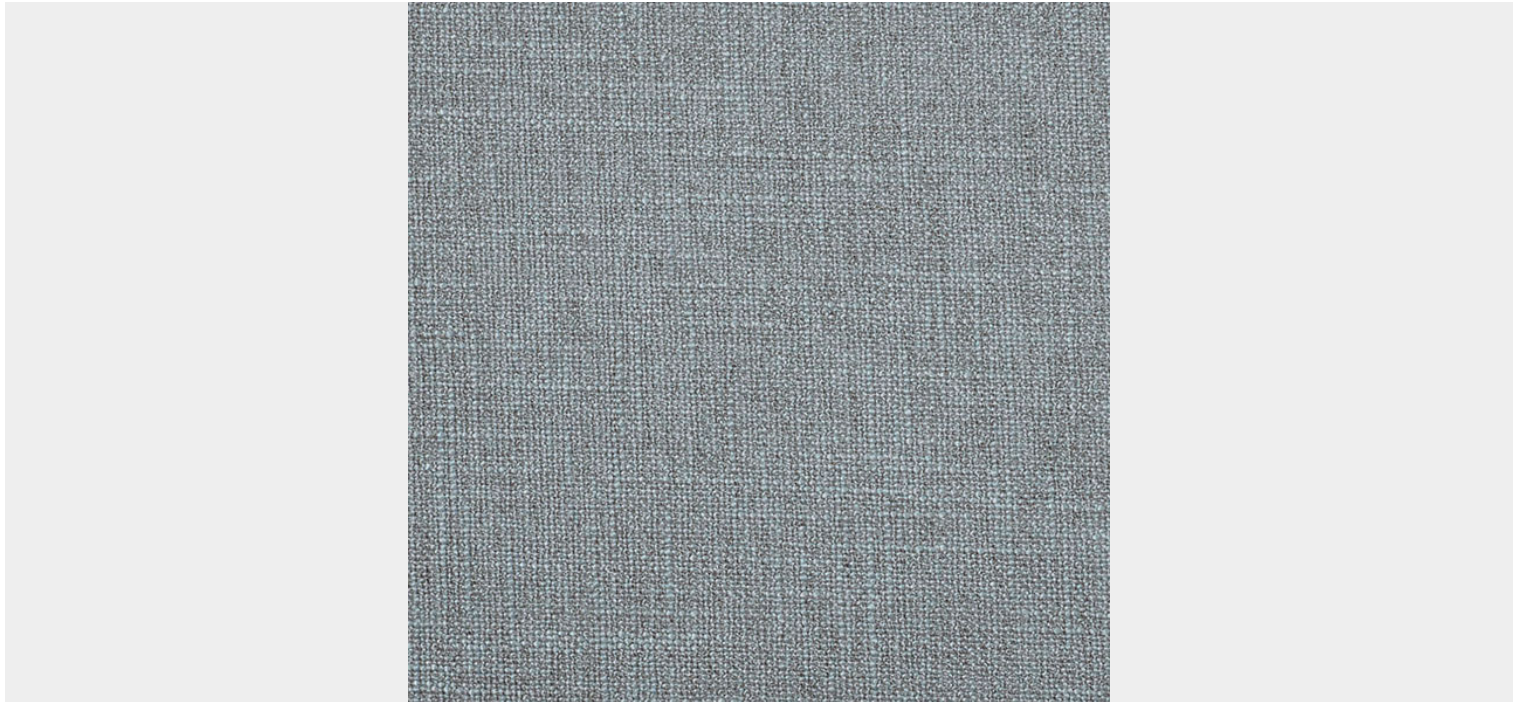


## HARVARD ASH



Images are for illustration purposes only, different screens will project different shades, please order your free sample to establish appropriateness of colour prior to order placement.

**SKU:** 125HAR7/906 | **Categories:** [Harvard](#), [Harvard](#) |

**Wash & Care** Vacuum or wipe clean routinely with a microfibre cloth lightly dampened with cold water only. Soak up spillages as soon as possible with an absorbent dry cloth to prevent staining. Do not steam clean. Do not use bleach. Do not tumble dry. Do not dry clean. Do not fully immerse in water Do not apply solvents, alcohol or any other chemical cleaners |

### ADDITIONAL INFORMATION

<b>Collection</b>	<a href="#">Harvard</a>
<b>Flammability Ratings</b>	<a href="#">B1</a> , <a href="#">BS 5852 IGN Source 5</a> , <a href="#">BS 7176 Medium Hazard</a> , <a href="#">BS EN 1021 1/2</a> , <a href="#">IMO FTP CODE 2010 Part 8</a> , <a href="#">NFPA 260</a>
<b>Design</b>	<a href="#">Harvard</a>
<b>Colourway</b>	<a href="#">906 Ash</a>
<b>Colour</b>	<a href="#">Grey</a>
<b>Product Type</b>	<a href="#">Woven</a>

<b>End Use</b>	<u>Upholstery</u>
<b>Sector</b>	<u>Cruise, Hospitality, Workspace</u>
<b>Material</b>	<u>Fire Retardant, Polyester</u>
<b>Pattern Type</b>	<u>Plain</u>
<b>Width</b>	<u>Standard Width</u>
<b>Width (cm)</b>	<u>138</u>
<b>Weight (g/m2)</b>	<u>700</u>
<b>Martindale Scale</b>	<u>100,001 – 200,000</u>
<b>Martindale Abrasion</b>	<u>130,000</u>
<b>Wyzenbeek Scale</b>	<u>100,001 – 200,000</u>
<b>Wyzenbeek DR</b>	<u>200,000</u>
<b>Technical Features</b>	<u>Stain Resistant</u>
<b>LRV Scale</b>	<u>21 – 30</u>
<b>LRV</b>	<u>21.7</u>
<b>FR Territories</b>	<u>Cruise, Germany, UK, USA</u>