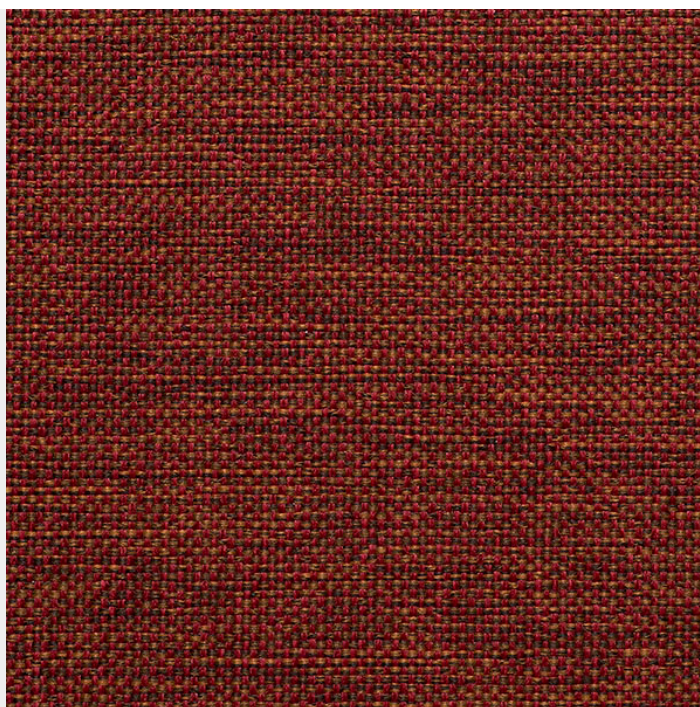


MARNA TERRACOTTA



Images are for illustration purposes only, different screens will project different shades, please order your free sample to establish appropriateness of colour prior to order placement.

SKU: 243MAR1/408 | **Categories:** [Marna](#), [Marna](#) |

Wash & Care Vacuum and wipe clean routinely with a microfibre cloth lightly dampened with cold water only Soak up spillages as soon as possible with an absorbent dry cloth to prevent staining Remove body fluids and extreme soiling immediately (within 15 minutes) with cold water then apply approved infection control protocol. Haz-Tabs, Chlor Clean, Acti-Chlor, Clinnell Universal Wipes and Panaz Shield Plus. As the concentration of bleach can vary greatly among proprietary brands we recommend these be avoided but in extreme circumstances a 5% solution may be used. Remove product residues and then dry with clean absorbent cloth. Do not steam clean - heat seals in stains Do not tumble dry Do not dry clean Do not fully immerse in water Do not apply solvents, alcohol or any other chemical cleaners |

ADDITIONAL INFORMATION

Collection

[Marna](#)

Flammability Ratings

[B1](#), [BS 5852 IGN Source 5](#), [BS 7176 Medium Hazard](#), [BS EN 1021 1/2](#), [CAL TB 117](#), [IMO FTP CODE 2010 Part 8](#), [NFPA 260](#)

Design	<u>Marna</u>
Colourway	<u>408 Terracotta</u>
Colour	<u>Orange</u>
Product Type	<u>Woven</u>
End Use	<u>Upholstery</u>
Sector	<u>Cruise, Healthcare, Hospitality, Workspace</u>
Material	<u>Fire Retardant, Polyester</u>
Pattern Type	<u>Plain</u>
Width	<u>Standard Width</u>
Width (cm)	<u>138</u>
Weight (g/m2)	<u>400</u>
Martindale Scale	<u>60,001 – 80,000</u>
Martindale Abrasion	<u>75,000</u>
Wyzenbeek Scale	<u>0 – 50,000</u>
Wyzenbeek DR	<u>30,000</u>
Technical Features	<u>Antimicrobial, Breathable, Stain Resistant, Waterproof</u>
LRV Scale	<u>0 – 10</u>
LRV	<u>7.1</u>
FR Territories	<u>Cruise, Germany, UK, USA</u>